



**MASCHINENPISTOLE 40/41**  
**SRC KAL.6MM GE 0640/41 TM III**  
**STEEL STAMPED / ELECTRIC BLOW BACK**



**SR40/41 INSTRUCTION MANUAL**





[WWW.STARRAINBOW.COM.TW](http://WWW.STARRAINBOW.COM.TW)



# PRODUCT ADVISORY

## **WARNING!**

Do not change, obscure, alter, remove, or obliterate any coloration or markings on this gun. The coloration and/or markings on this product, including the blaze orange barrel tip are designed to comply with applicable state and federal law and regulations.

## **WARNING!**

This product maybe mistaken for a firearm by law enforcement officers or others. Any person who changes, alters, removes, or obliterate any coloration or markings that are required by state or federal law or regulation, in anyway that makes this product look more like a firearm is guilty of a misdemeanor.

## **WARNING!**

The open display, brandishing and/or exposing of this product in any "public place" may cause confusion and maybe a crime.

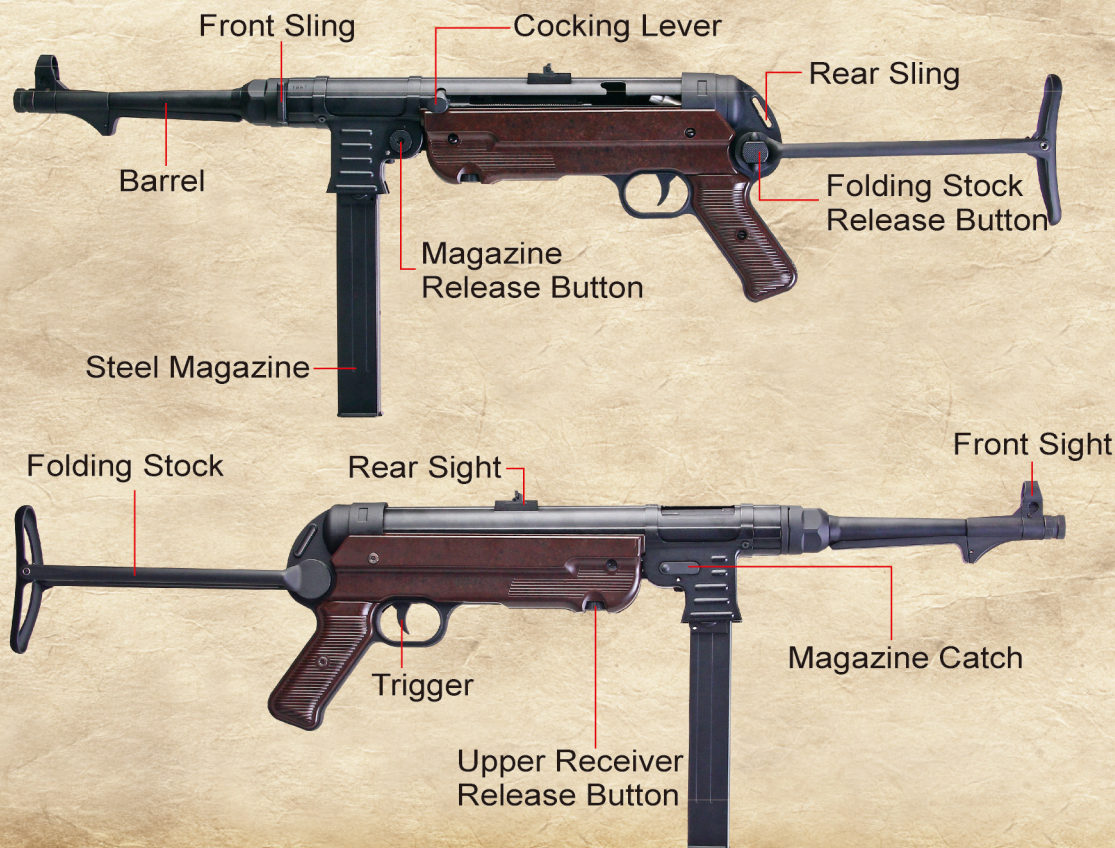
The team "public place" means any area opened to the public, including but not limited to, streets, sidewalks, bridges, alleys, plazas, parks, driveways, front yards, parking lots, automobiles, whether moving or not, and buildings opened to the general public including those that serve food or drink, or provide entertainment, and the doorways and entrances to buildings or dwellings.

## **WARNING!**

Every person who excepts in self-defense, draws or exhibits this product in a threatening manner against another in such a way as to cause a reasonable person apprehension or fear of bodily harm is guilty of a misdemeanor punishable by imprisonment in the county jail for a term of not less than 30 days.



# SR40 COMPONENT





# SR41 COMPONET





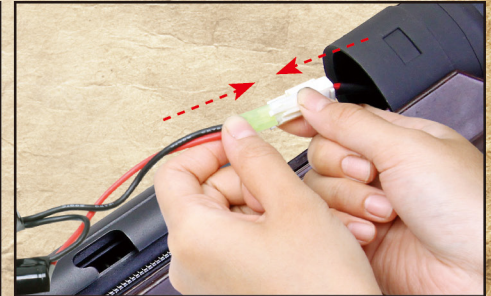
# INSERT BATTERY



1.Pull the receiver release button and rotate 180°



2.Disassemble the upper and lower receiver by pulling them in the opposite way



3.Connect the battery with wire



4.Put the battery inside the receiver



5.Assemble the upper and lower receiver by pushing them in the same direction

## **WARNING!**

Please use a fully charged SRC 8.4 battery (Mini type)



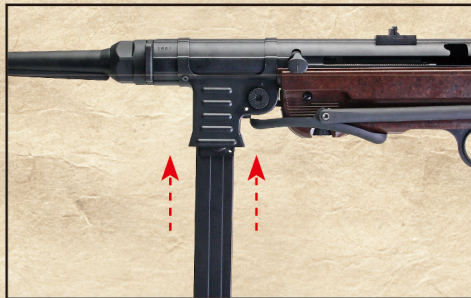
# MAGAZINE OPERATION



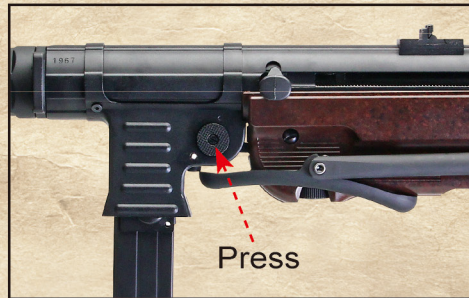
1. Open the cover of magazine and insert BBs into the magazine



2. Turn the gear at the button until heard click sound



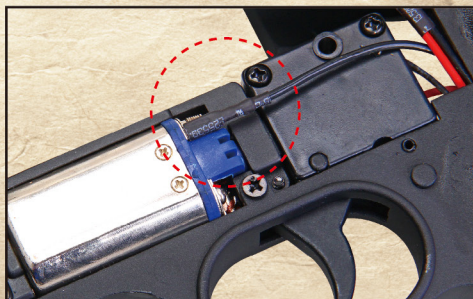
3. Insert the magazine as picture shows until the "click" sound is heard



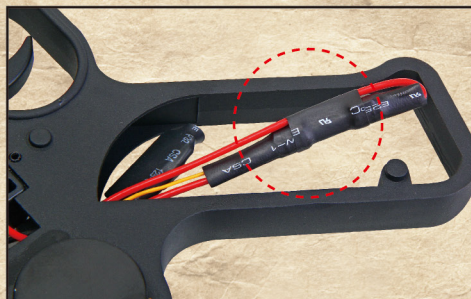
4. Press the magazine release button to release the magazine



# SR40/41 SERIES TROUBLESHOOTING



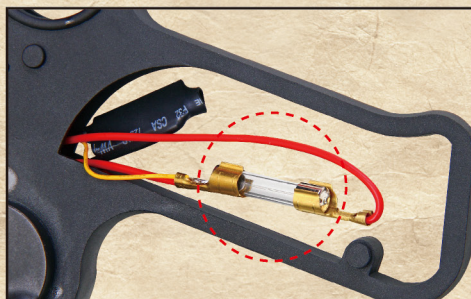
Please check the motor wiring connections



Please check the connectors



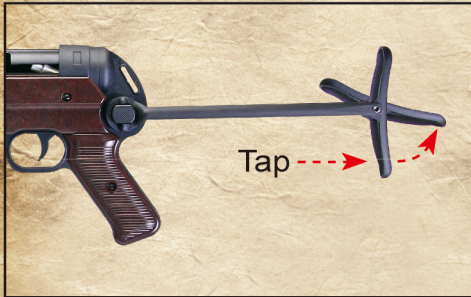
When the gear noise become shrilly



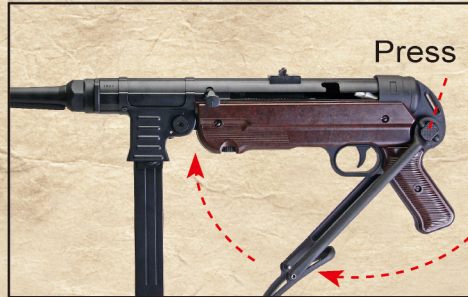
Please check the fuse



# FOLDING STOCK OPERATION



1. Tap the end of stock, and rotate the stock



2. Press the stock release button to fold the stock



3. Rotate the stock until the "click" sound heard

## **WARNING!**

Do not aim or fire at a human or animal





# HOP UP ADJUST



1. Pull the charging handle and hold the hop up chamber will appear



2. Adjust the hop up as picture shows

Too much hop up

Best

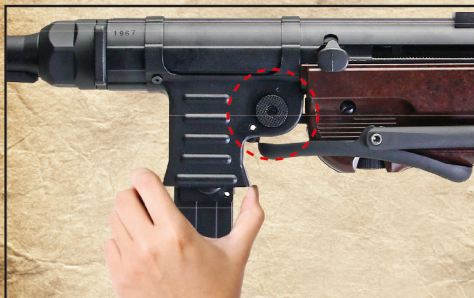
Not enough hop up



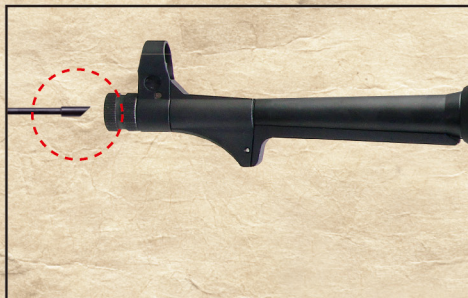
Shoot a few rounds, exam the trajectory and make further adjustments, as needed.  
The best position is when the bullets fly horizontally and the longest flying distance is obtained.



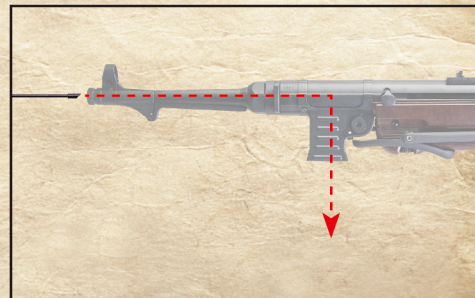
# CLEARING JAMMED BBS



1. Push the magazine release button and remove the magazine



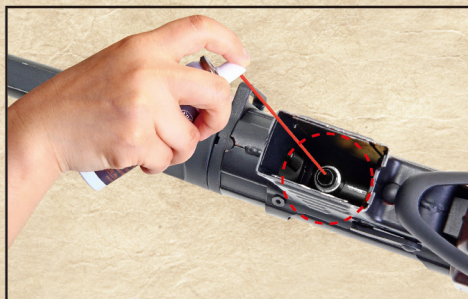
2. Turn off the hop up by moving the hop up lever all the way towards the normal setting. Use the slanted end of the cleaning rod



3. Insert the cleaning rod into the barrel to remove the jammed BBs



4. Use airsoft safe silicon to lubricate the hop up chamber and magazine lip



5. Use silicon lubricant sparingly



SRC silicon Oil

**WARNING!** Use SRC precision BBs only.



# SR40/41 SHOOTING MODES SET



1. Pull the second rear sight when the target is in a certain distance



## AUTO MODE

Press the button from the right



2. Put the second rear sight down, when the object are closed to aim

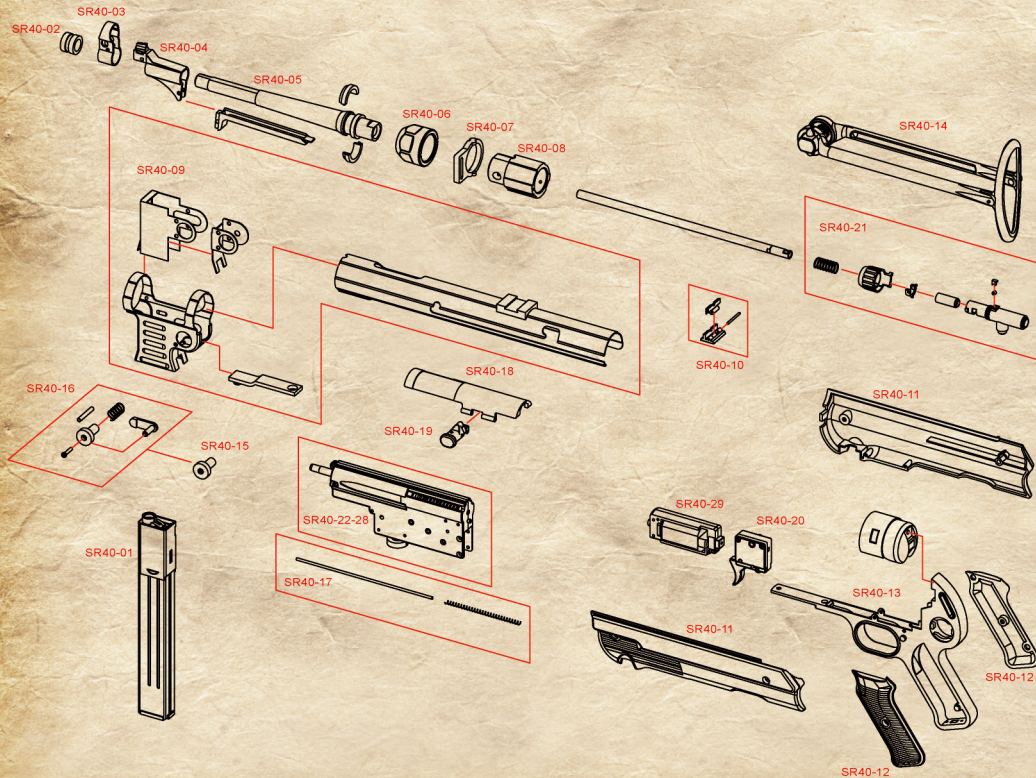


## SEMI MODE

Press the selector lever button from the left



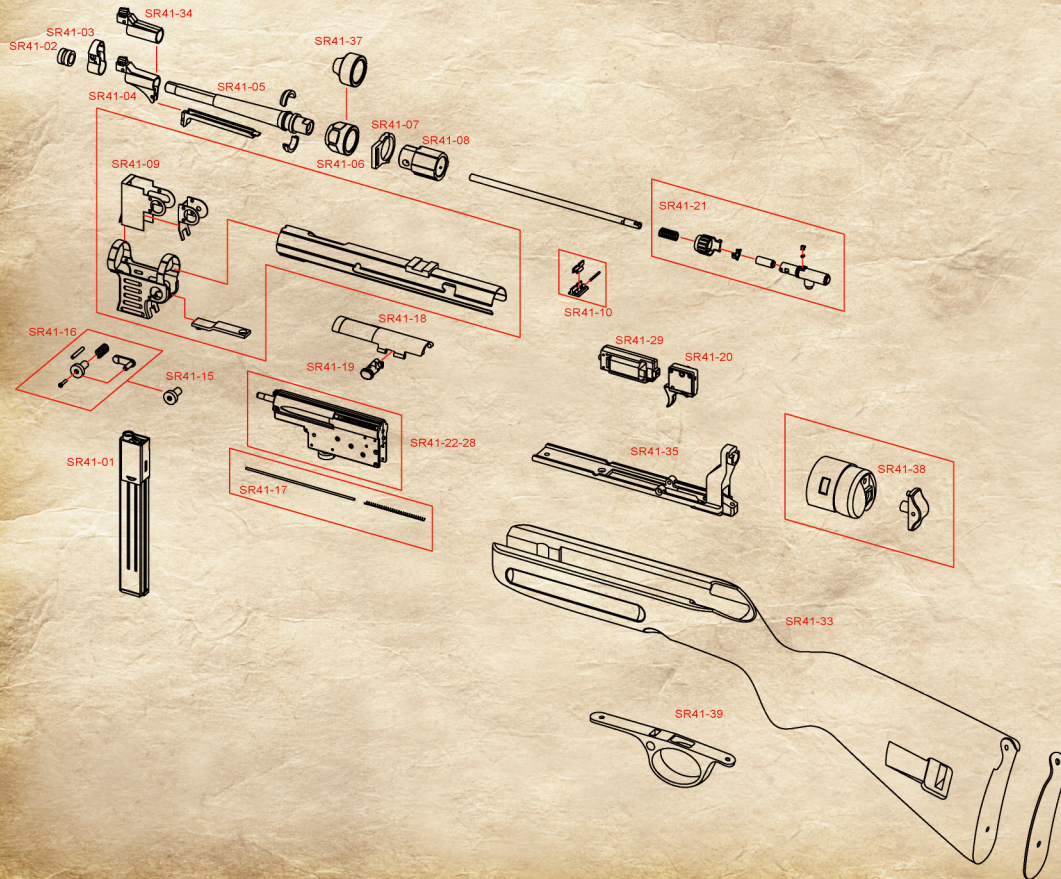
# SR40 SERIES SCHEMATIC



|         |                                  |
|---------|----------------------------------|
| SR40-01 | 280 Rounds magazine              |
| SR40-02 | Flash hider                      |
| SR40-03 | Front sight ring                 |
| SR40-04 | Front sight set                  |
| SR40-05 | Aluminum barrel(w/ fix ring)     |
| SR40-06 | Barrel fix nut                   |
| SR40-07 | Front sling                      |
| SR40-08 | Barrel base                      |
| SR40-09 | Frame                            |
| SR40-10 | Rear sight                       |
| SR40-11 | Receiver cover                   |
| SR40-12 | Grip                             |
| SR40-13 | Frame                            |
| SR40-14 | Folding stock set                |
| SR40-15 | Receiver release button          |
| SR40-16 | Magazine catch set               |
| SR40-17 | Bolt fix set                     |
| SR40-18 | Bolt                             |
| SR40-19 | Cocking Handle                   |
| SR40-20 | Trigger &FET wire set            |
| SR40-21 | Hop Up Chamber                   |
| SR40-22 | SR40 Gear box set                |
| SR40-23 | SR40 Aluminum Cylinder           |
| SR40-24 | SR40 Cylinder(black)             |
| SR40-25 | SR40 Piston                      |
| SR40-26 | SR40 Tappet Plate                |
| SR40-27 | Air Nozzle MP40                  |
| SR40-28 | Gear Box                         |
| SR40-29 | SR40 Motor Base                  |
| SR40-30 | SR40 Sling                       |
| SR40-31 | SR40 Magazine Pouch              |
| SR40-32 | SR40 110 Rounds Low-Cap Magazine |
| SR40-33 | SR41 WOOD STOCK                  |
| SR40-34 | SR41 FRONT SIGHT                 |
| SR40-35 | SR41 GEARBOX BASE                |
| SR40-36 | SR41 Outer Barrel                |
| SR40-37 | SR41 Barrel Nut                  |
| SR40-38 | SR41 Recevier                    |
| SR40-39 | SR41 Trigger                     |



# SR41 SERIES SCHEMATIC



|         |                                  |
|---------|----------------------------------|
| SR41-01 | 280 Rounds magazine              |
| SR41-02 | Flash hider                      |
| SR41-03 | Front sight ring                 |
| SR41-04 | Front sight set                  |
| SR41-05 | Aluminum barrel (w/ fix ring)    |
| SR41-06 | Barrel fix nut                   |
| SR41-07 | Front sling                      |
| SR41-08 | Barrel base                      |
| SR41-09 | Frame                            |
| SR41-10 | Rear sight                       |
| SR41-11 | Receiver cover                   |
| SR41-12 | Grip                             |
| SR41-13 | Frame                            |
| SR41-14 | Folding stock set                |
| SR41-15 | Receiver release button          |
| SR41-16 | Magazine catch set               |
| SR41-17 | Bolt fix set                     |
| SR41-18 | Bolt                             |
| SR41-19 | Cocking Handle                   |
| SR41-20 | Trigger & FET wire set           |
| SR41-21 | Hop Up Chamber                   |
| SR41-22 | SR40 Gear box set                |
| SR41-23 | SR40 Aluminum Cylinder           |
| SR41-24 | SR40 Cylinder (black)            |
| SR41-25 | SR40 Piston                      |
| SR41-26 | SR40 Tappet Plate                |
| SR41-27 | Air Nozzle MP40                  |
| SR41-28 | Gear Box                         |
| SR41-29 | SR40 Motor Base                  |
| SR41-30 | SR40 Sling                       |
| SR41-31 | SR40 Magazine Pouch              |
| SR41-32 | SR40 110 Rounds Low-Cap Magazine |
| SR41-33 | SR41 WOOD STOCK                  |
| SR41-34 | SR41 FRONT SIGHT                 |
| SR41-35 | SR41 GEARBOX BASE                |
| SR41-36 | SR41 Outer Barrel                |
| SR41-37 | SR41 Barrel Nut                  |
| SR41-38 | SR41 Receiver                    |
| SR41-39 | SR41 Trigger                     |



# TROUBLE SHOOTING

| SYMPTOM                                       | CAUSE                               | ACTION                                               |
|-----------------------------------------------|-------------------------------------|------------------------------------------------------|
| No operation at all                           | Selector lever set to SAFE          | Set the selector lever to AUTO or SEMI               |
|                                               | Battery is not charged              | Charge the battery                                   |
|                                               | Battery connector is disconnected   | Connect the connector                                |
|                                               | Expired motor life(50,000)          | Replace the motor                                    |
|                                               | FUSE is blown out                   | Replace the FUSE                                     |
| Motor is revolving<br>but gun<br>doesn't work | Faulty gear                         | Purchase the replacement gear from the dealer        |
|                                               | Bullets are clogged in the chamber  | Using the cleaning rod to remove the bullet          |
|                                               | Bullets are clogged in the magazine | Shake the magazine and confirm use SRC precision BBs |
| Malfunction of<br>SEMI auto                   | Deviation in gear timing            | Set to SEMI after firing 2~3 sec in FULL AUTO        |
|                                               | Faulty gear lever                   | Purchase the replacement parts from the dealer       |
| Malfunction of<br>FULL auto                   | Deviation in gear timing            | Set to SAFE first then set to FULL auto again        |
|                                               | Faulty gear lever                   | Purchase the replacement parts from the dealer       |
| Firing circle slow                            | Insufficient battery power          | Charge the battery and make sure use SRC batteries   |
| Shooting distance<br>short                    | Hop up system doesn't working       | Adjust HOP UP                                        |
|                                               | Faulty BB bullets                   | Please use SRC precision BBs                         |
|                                               | Faulty O-ring                       | Purchase the replacement parts from the dealer       |
| Loud or other                                 | Operation doesn't correctly         | Purchase the replacement parts from the dealer       |





**SRC**<sup>®</sup>  
WWW.STARRAINBOW.COM.TW



SRC AIRSOFT TV

**You Tube**  
Broadcast Yourself™

