

FULL METAL TITAN CO2 REVOLVER

6mm AIRSOFT Ver.
GEL BALL Ver.



- ▲ 12 Gram CO2 Cartridge Only
- ▲ For Your Safety, Keep Hands And Face Away From Escaping CO2 Gas
- ▲ Always Point The Pistol's Muzzle At A Safe Direction
- ▲ **WARNING**

1. Do not change, alter, remove, or obliterate any colorations or markings on this gun. The colorations and markings of this product are designed to comply with the laws and regulations of state, federal, and nation.

2. This product could be mistaken as a firearm easily by law enforcement officers or others. Anyone who changes, alters, removes, or obliterate any colorations or markings are supposed to meet the state or federal laws and regulations. In any way that makes this product look like a real firearm is a crime.

Displaying and exposing of this product in any "public places" may cause confusion or even be considered as a crime. The term of "public place" means any areas that opened to the public, including streets, sidewalks, bridges, alleys, plazas, parks, driveways, front yards, parking lots or even automobiles. Buildings that serve food and drink, or provide entertainment, and the doorways and entrances to buildings or dwellings are parts of public places as well.

Any person who uses this product in the means of bully, insult, threat or deterrent to cause either physical or mental trauma of another is considered illegal and could result in sentence of imprisonment.



Titan Revolver Series

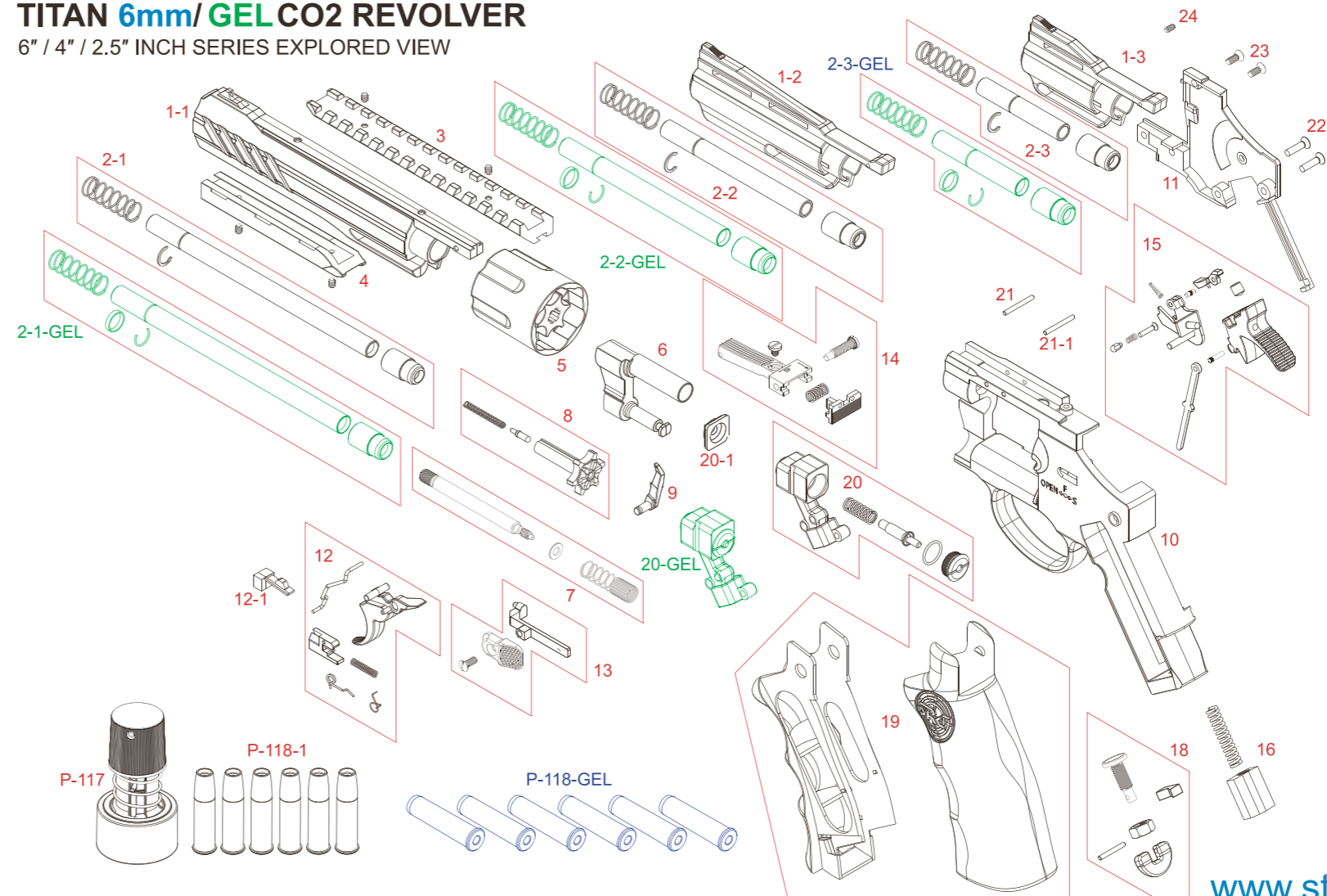


6 INCHES SERIES UPPER/LOWER RAIL INSTALLATION



TITAN 6mm/ GEL CO2 REVOLVER

6" / 4" / 2.5" INCH SERIES EXPLORED VIEW



1-1	OUTER BARREL (TITAN 6")
1-2	OUTER BARREL (TITAN 4")
1-3	OUTER BARREL (TITAN 2.5")
2-1	INNER BARREL (6mm 6")
2-2	INNER BARREL (6mm 4")
2-3	INNER BARREL (6mm 2.5")
3	UPPER RAIL (TITAN 6" ONLY)
4	DOWN RAIL (TITAN 6" ONLY)
5	CYLINDER
6	CRANE
7	EXTRACTOR ROD SET
8	EXTRACTOR
9	HAND
10	FRAME
11	SIDE PLATE
12	TRIGGER
12-1	CYLINDER HOLDER
13	CYLINDER RELEASE / SAFETY
14	REAR SIGHT
15	HAMMER
16	HAMMER SPRING
18	PUNCTURE SCREW
19	GRIP
20	CO2 CHAMBER (6mm)
20-GEL	CO2 CHAMBER (Gel)
20-1	SEALING RUBBER
21	PIN
21-1	PIN
22	SCREW X2
23	SCREW X2
24	SCREW X1
P-117	BB LOADER
P-118-1	BULLET X 6 (6mm)

